



TAI-SAW TECHNOLOGY CO., LTD.

No. 3, Industrial 2nd Rd., Ping-Chen Industrial District,
Taoyuan, 324, Taiwan, R.O.C.

TEL: 886-3-4690038 FAX: 886-3-4697532

E-mail: tstsales@mail.taisaw.com Web: www.taisaw.com

Product Specifications Approval Sheet

Issued Date:

Product Name: SAW Resonator 1279.6MHz SMD 3X3 mm

TST Parts No.: TC0630A

Customer Parts No.: _____

Company: _____
Division: _____
Approved by : _____
Date: _____

Checked by: _____ Michael Yang *Michael*

Approval by: _____ Bob Chau *Bob Chau*

Date: _____ 2014/2/21

1. Customer signed back is required before TST can proceed with sample build and receive orders.
2. Orders received without customer signed back will be regarded as agreement on the specifications.
3. Any specifications changes must be approved upon by both parties and a new revision of specifications shall be released to reflect the changes



TAI-SAW TECHNOLOGY CO., LTD.

No. 3, Industrial 2nd Rd., Ping-Chen Industrial District,
Taoyuan, 324, Taiwan, R.O.C.

TEL: 886-3-4690038 FAX: 886-3-4697532

E-mail: tstsales@mail.taisaw.com Web: www.taisaw.com

SAW Resonator 1279.6 MHz

MODEL NO.:TC0630A

REV. NO.:1.0

A. FEATURES:

- 1-Port Resonator.

B. MAXIMUM RATING:

- 1.Input Power Level: 0 dBm
- 2.DC voltage: 0 V
- 3.Operating Temperature: -40°C to +85°C
- 4.Storage Temperature: -40°C to +85°C

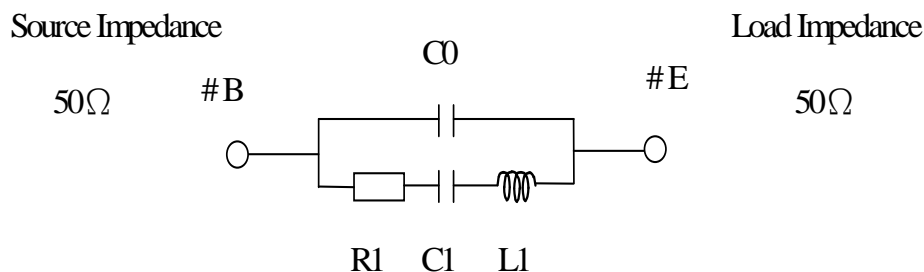
C. ELECTRICAL CHARACTERISTICS:

Characteristic	Units	Minimum	Typical	Maximum
Center frequency Fr	MHz	1279.4	1279.6	1279.8
Insertion Loss IL	dB	-	1.6	2.0
Equivalent Elements				
Unload quality factor Qu		4000	5000	
Motional capacitance C1	fF	-	3.5	-
Motional inductance L1	μH	-	4.6	-
Motional resistance R1	Ohm	-	4.8	-
Parallel capacitance Co	pF	-	3	-
Temp.coeff.	ppm/c*2	-	0.05	-
Turnover To	deg.C	-	25	-
Package size		SMD 3.0X3.0X1.4mm		

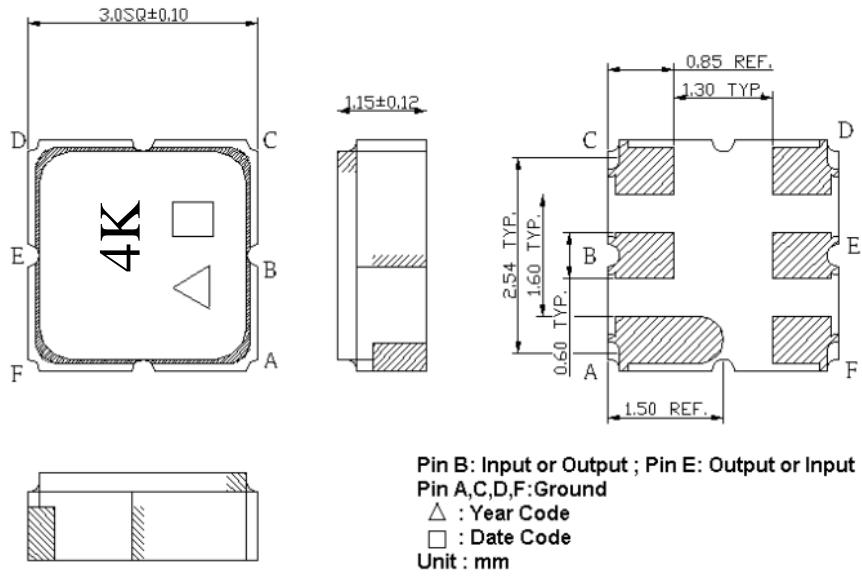
RoHS Compliant
Lead free
Lead-free soldering

D. EQUIVIRENT CIRCUIT:

One-Port Resonator:



E. OUTLINE DRAWING:



□ Data code : See the table

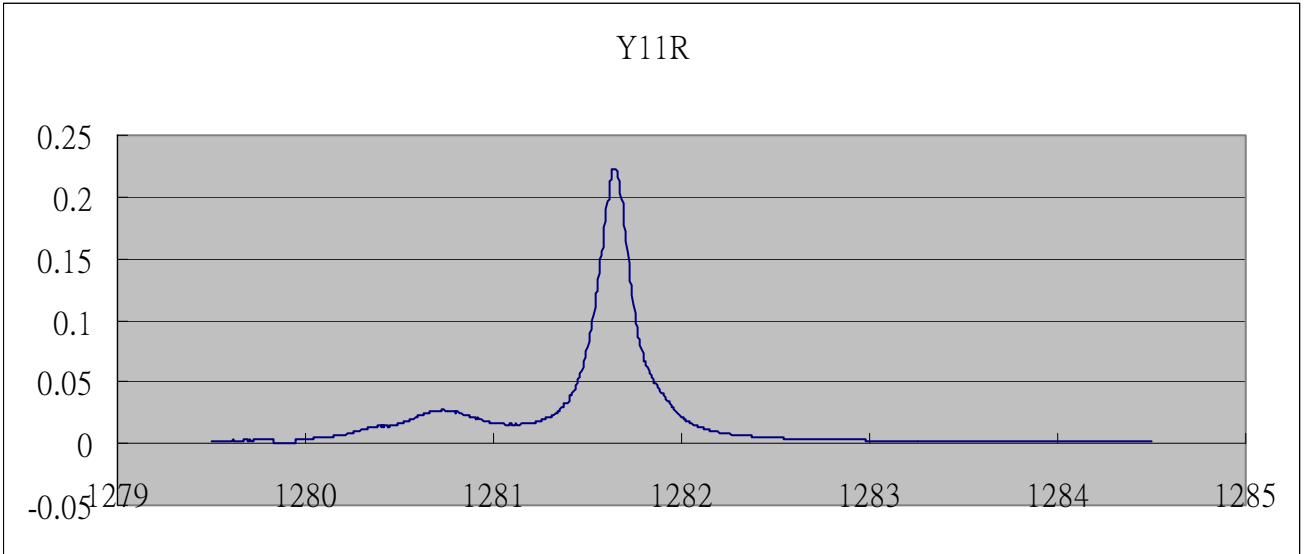
WK	01	02	...	26	27	28	...	52
Code	A	B	...	Z	a	b	...	z

△ Year code : See the table

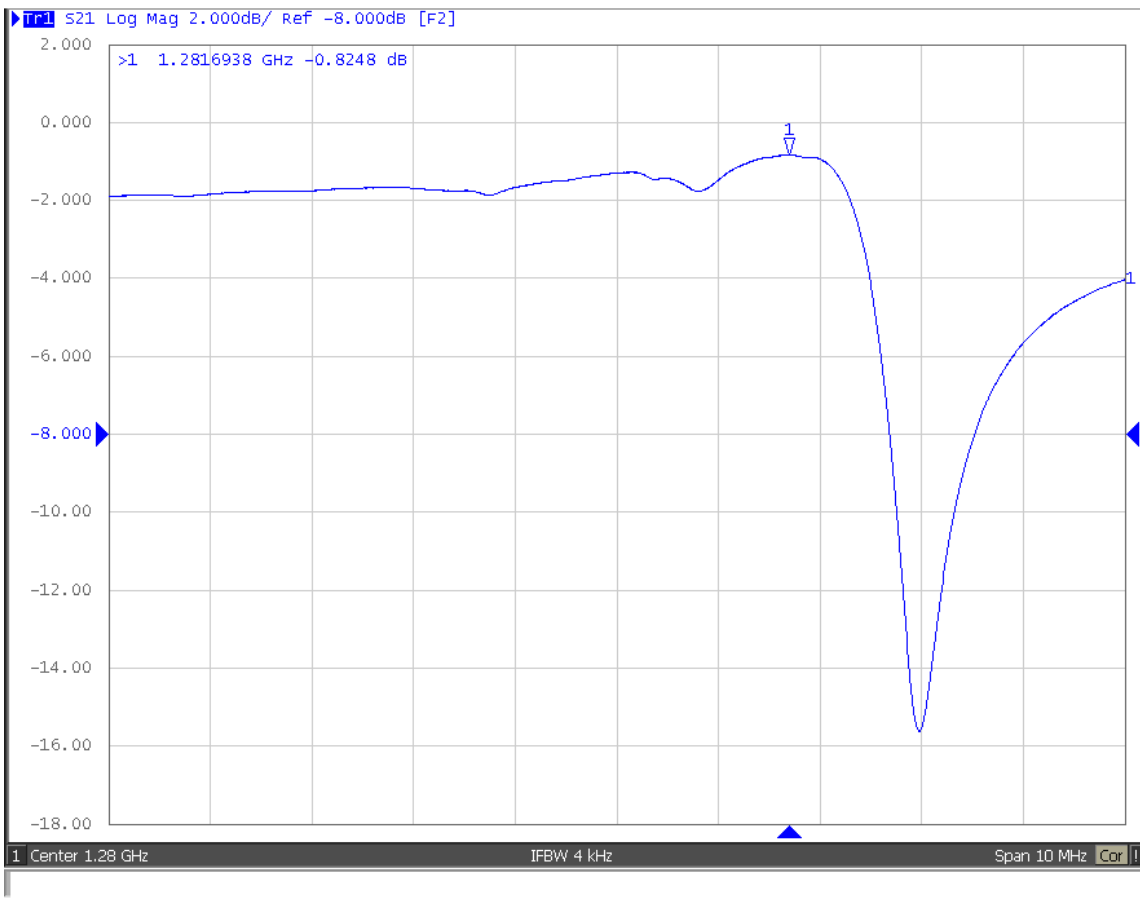
Year	2008	2009	2010	2011	...	2019	2020
Code	8	9	0	1	...	9	0

F. FREQUENCY CHARACTERISTICS:

S11:

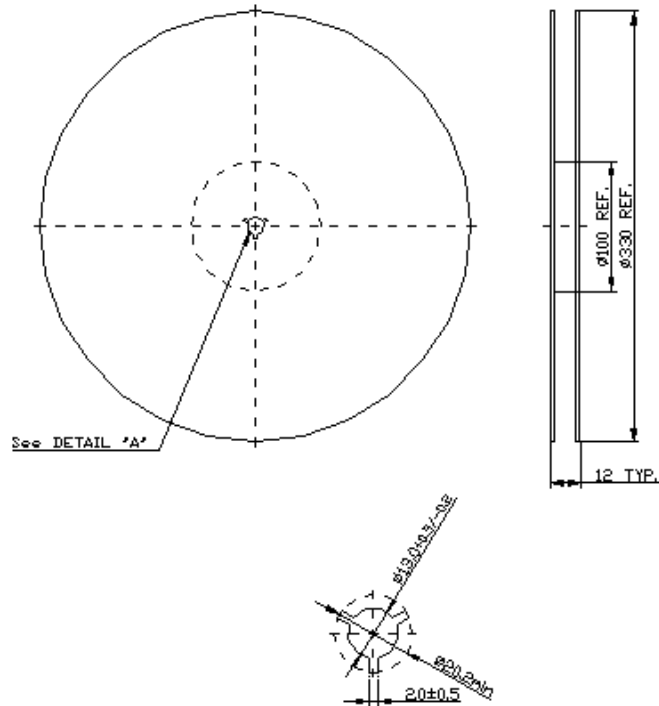


S21

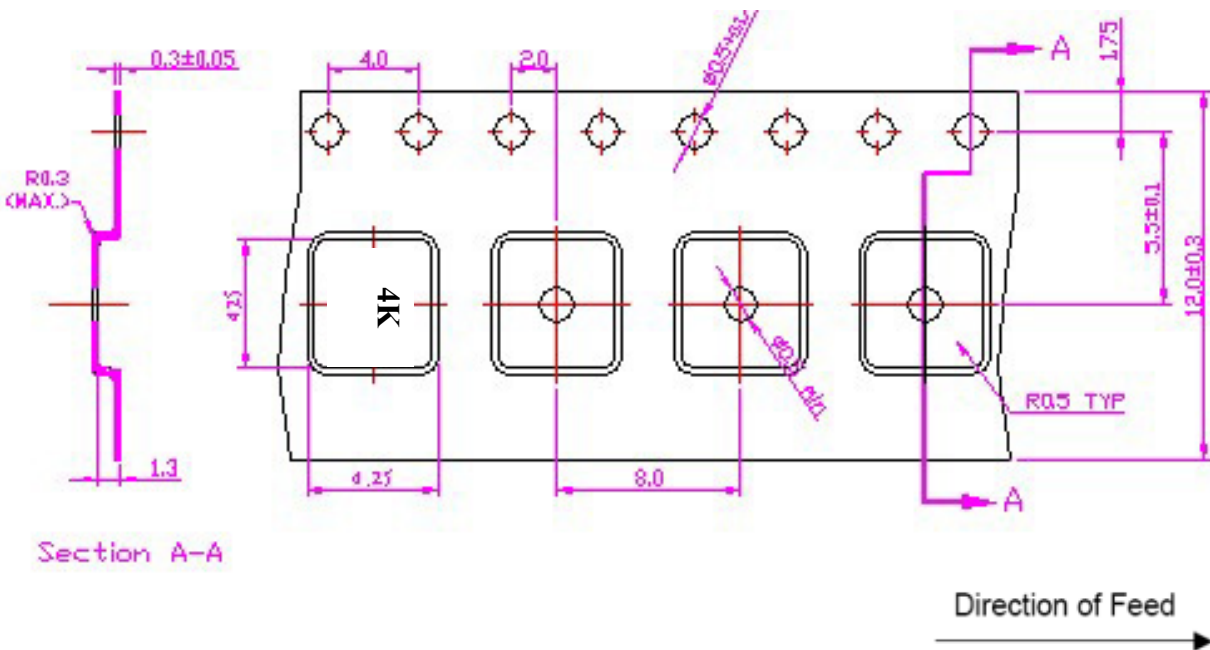


F. PACKING:

1. REEL DIMENSION



2. TAPE DIMENSION



G. RECOMMENDED REFLOW PROFILE :

